



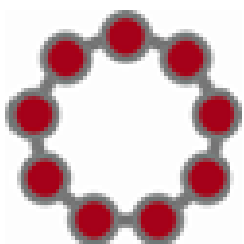
ROCHDALE
BOROUGH COUNCIL

play 
achieve 
inspire 

Rochdale Music Service

Vocal Strategy

September 2016



Greater Manchester
MUSIC HUB



ROCHDALE
BOROUGH COUNCIL

Our Vocal Vision

The Mission Statement of Rochdale Music Service is that singing should be at the heart of every school and should be accessible to all. It is our vision to give every child and young person the best possible opportunity to sing and raise awareness of singing in the community and beyond. Through high quality delivery we aim to enthuse children and adults to participate in singing opportunities. We will work with our partners to promote, support, develop and strengthen singing across the Borough of Rochdale.

Key Aims of the Vocal Strategy

Rochdale Music Service Vocal Strategy aims to promote singing and develop high quality vocal work across the Borough of Rochdale. We are keen to support singing in schools, sourcing appropriate repertoire and delivering vocal activity of the highest standard.

Through our Vocal Strategy we aim to:

- Engage every Rochdale pupil in singing and raise the profile of singing.
- Establish links with the wider vocal community and develop support networks and strong relationships with the community as well as schools.
- Support schools in providing singing at every level and promote singing for all.
- Enable every school across the Borough of Rochdale to have a choir or singing group.
- Provide and support extension pathways outside school, ensuring all pupils have access to progression routes to sing at all levels. E.g. GMMH show choir.
- Offer high quality singing events, opportunities and vocal initiatives for all ages.
- Ensure all Rochdale Music Service staff to develop high quality vocal leadership across all provision; promoting vocal health and longevity as well as best practice across the whole range of vocal activity.
- Organise repertoire to show progression through the school years and beyond as well as developing and creating resources.
- Increase teacher confidence in leading singing in the classroom across the Borough of Rochdale ensuring access to CPD for all staff at all levels.
- Aim for equality of opportunity for all pupils, regardless of race, gender, location, musical ability, parental income, whether they have special needs or disabilities, and whether they are looked after children.

The Context

Rochdale Music Service aims to develop inspirational partnerships with our Greater Manchester Music Education Hub, other music services and regional music organisations which enable all children to enjoy high quality music making from the earliest beginnings. Also to aid them to access a broad range of coherent musical pathways in and beyond school, which promote self-confidence, ambition and achievement.

At Rochdale we strive to be an entirely inclusive music service not only working with children and young people in mainstream education but creating musical opportunities for the disabled as well as children and adults with special educational needs. Our work also extends to the wider community.

We are part of a collaboration of eight other local music services (Bolton, Bury, Oldham, Salford, Stockport, Tameside, Trafford and Wigan) known as The Greater Manchester Music Hub. Our twelve other partners include: BBC Philharmonic Orchestra, The Bridgewater Hall, Brighter Sound, Charanga, Chethams Music School, Greater Manchester Arts, The Hallé, The Manchester Camerata, MMU, Music and the Deaf, Music Unlimited, The RNCM, Salford University, Sing For Pleasure and The Voices Foundation.

The vocal strategy also links into these strategies and policies:

Department for Education

‘The Importance of Music – A National Plan for Music Education’ (2011)

“Singing can improve pupils’ learning, confidence, health and social development. It has the power to change lives and build stronger communities. This is why we are asking hubs to develop singing strategies in and beyond schools to ensure that every child sings regularly and that choirs are available. Such strategies will widen singing opportunities for all pupils, drive up quality and give routes for progression such as access to chorister programmes, area/ county choirs and National Youth Choir.”

Arts Council England

‘Achieving Great Art for Everyone – A Strategic Framework for the Arts’ (2011-2021)

At the heart of the framework, Arts Council England (ACE) identifies five goals to help achieve great art for everyone, which are as follows:

1. Talent and artistic excellence are thriving and celebrated
2. More people experience and are inspired by the arts
3. The arts are sustainable, resilient and innovative
4. The arts leadership and workforce are diverse and highly-skilled
5. Every child and young person has the opportunity to experience the richness of the arts

Current Provision at Rochdale Music Service

The following provision is now embedded by Rochdale Music Service at a local level:

- Singing as an integral part of the Wider Opportunities Provision
- Curriculum music provision has singing embedded at the core
- Many Vocal Ensembles are available at our Music Centre
- Bespoke Vocal Projects and Festivals, both for school clusters and borough-wide
- Support and development of school choirs and singing groups
- Providing high quality CPD for teachers
- Actively sign-posting pathways for gifted and talented pupils
- Provision of individual and small group vocal tuition

Other provision which is new and emerging at Rochdale Music Service:

- A commitment to develop community links and to promote singing in the wider community
- Integration of SEND and Mainstream singing
- Opportunities for singing with pre-school children
- Providing Performance Opportunities, such as celebration events
- Developing and enhancing EYFS singing
- Running CPD events for Singing in the Classroom at schools across the borough

Just a few annual opportunities available across the Greater Manchester Music Hub:

- GM Hub Show Choir
- Vocal Workshops
- Primary Schools' Singing Challenge
- Regular project days throughout the year
- Hallé Choirs

At Rochdale Music Service we are committed to carrying out an annual Vocal Audit of singing across our region and to developing and reviewing local strategies on a regular basis both to evaluate current provision and to inform future planning. The results of the audit are also shared amongst the Vocal Vision Group. This is a steering group for the hub, made up of a key vocal leader or manager from each Music Service, who meet on a regular basis. On an ad hoc basis, the group is also joined by representatives from other hub partners who are involved in singing, usually when they are also involved in projects and resources.

Our Partners

Rochdale Music Service we are engaged in working closely with our partners across Greater Manchester, including Bolton Music Service, Bury Music Service, Oldham Music Service, Salford Music Service, Stockport Music Service, Tameside Music Service, Trafford Music Service and Wigan Music Service.

As Part of the Greater Manchester Music Hub we have already engaged with Vocal Projects with a number of external partners, including The BBC Philharmonic Orchestra, Brighter Sound, Chethams Music School, The Hallé, Music Unlimited and Sing for Pleasure, and welcomes opportunities to further these partnerships.

Working with SEND

At Rochdale Music Service we have a strong ethos of being a completely inclusive music service and have become closely linked with Music Unlimited delivering their Total Vocals Projects. These projects have involved staff working with children with special education needs and disabilities. The projects have included:

- Facilitating and running singing groups and choirs in SEND schools in Rochdale
- Participating in Super Sing Events at The Bridgewater Hall involving schools across Greater Manchester
- Partnering SEND school choirs with mainstream school choirs
- Providing SEND schools with staff to run a school choir
- Training and facilitating SEND school staff to run their own school choir

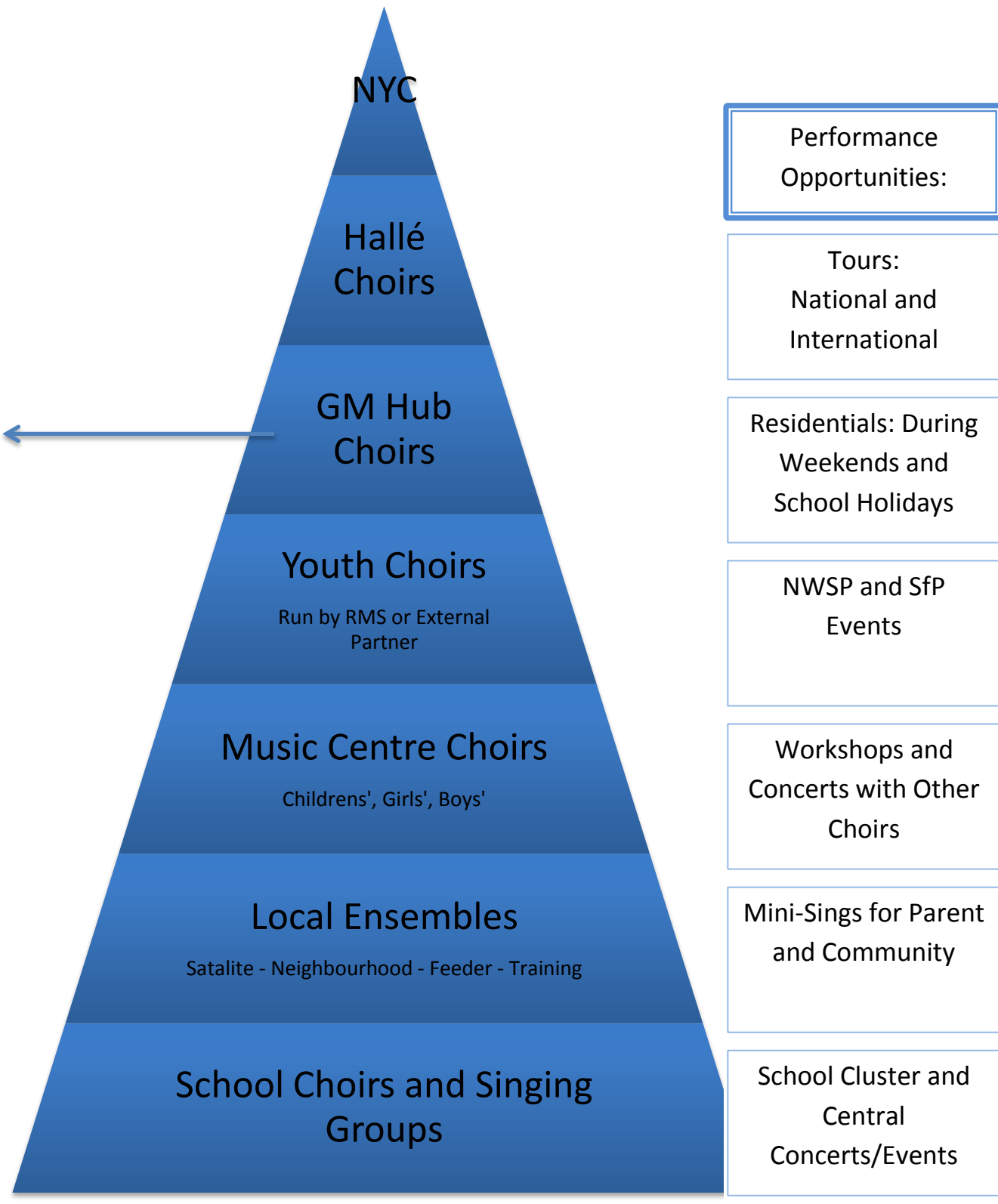
Building on the principals of Total Vocals with Music Unlimited we will work together with the Greater Manchester Music Hub to:

- Encourage the competition of works to support inclusive singing and maintain a list of existing works proven to do so
- Furnish all Greater Manchester Hub partners with a singing leader SEND starter pack
- Establish a SEND/mainstream referral network
- Establish a public first contact point for inclusion information and opportunities within the Greater Manchester Music Hub for potential participants, parents and carers
- Maintain a list of mainstream students willing to act as performers and pastoral team leaders at inclusion events
- Establish universally agreed assessment tools for singers with SEND

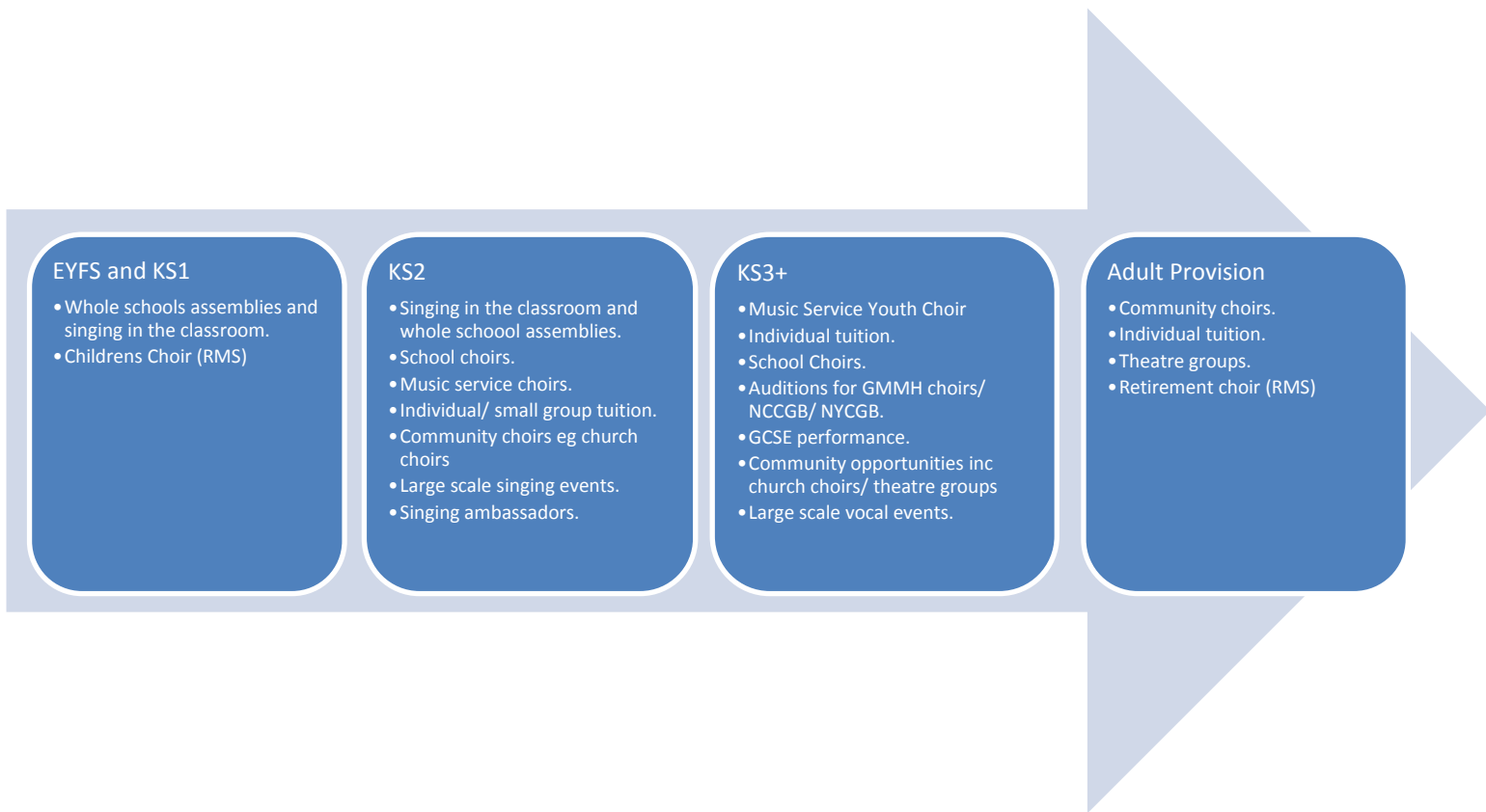
Ensemble Progression Pyramid

On the next page, there is a diagrammatic representation of Rochdale Music Service Ensembles Progression Pyramid, articulating possible progression routes for pupils from school choirs to the highest levels. The pyramid shows possible performance opportunities as well as provision for adults in schools and the wider community.

Rochdale Music Service Progression Pyramid



Paths for Progression



Focus Area: Schools

There are 89 schools including academies and special schools in Rochdale. The challenge is working strategically to ensure singing and vocal work is thriving in all its schools and that all its schools and all pupils have the opportunity to sing regularly and progress to the next level of excellence if they wish to. RMS will appoint singing tutors/choir leaders on request and can work with schools to identify gaps in their vocal provision. We will provide support for teachers in schools that they need to confidently use singing in the classroom, set up school choirs and understand the benefits of singing to teaching and learning.

The Singing School



Singing MOT

Over the next two years the Music Service will create new projects to support schools with their singing strategies and enhance pupil's experiences in singing. These projects include Singing MOT.

The key aims of the Singing MOT are:

- To assess all Rochdale primary schools and help to ensure that they are teaching singing to the highest possible standard.
- To help to develop a sustainable, long-term, high quality singing strategy which is specific to the school's needs.
- To inform pupils and staff of other singing opportunities in the local area.

An experienced vocal tutor will visit a school during an active school day to discuss and observe how singing works throughout the school. There will be a short vocal questionnaire prior to the visit. It will begin with a brief meeting with the head teacher and the music coordinator then schools will be invited to demonstrate some of their singing work. This will be followed by a singing session delivered by the vocal tutor (this could be whole school/Early Years/KS1/KS2/school choir). After the singing session there will be a feedback session with the head teacher and music coordinator. The tutor will then create a report identifying the school's strengths in singing and outlining areas for development with suggestions of ways to achieve this.

Singing Ambassadors

Rochdale Music Service would like schools to nominate Singing Ambassadors in their school. These would be children who have been identified as being confident with their singing and would take on this role to promote singing in their school. It aims to reawaken the playground culture of singing and training would be provided for these children so that they can facilitate and lead singing games in the playground.

Where Do We Go From Here?

Over the next two years RMS will create links with schools wanting help to develop vocal work within their school. We will support staff in using singing in the classroom linking with existing curriculum projects and aiding with age appropriate repertoire choices. We will also offer CPD sessions for staff covering singing for Early Years, KS1 and KS2. We will work with individual members of staff up-skilling them for running choirs and leading singing assemblies within their school to aid schools in the creation of a singing legacy within their school. We hope that projects like The Singing MOT and Singing Ambassadors and will aid in achieving these goals.

We would love to expand our RMS choirs through advertisement in schools and the local community as well as developing a boys' choir run by one of our male singing leaders. We would like to run Boys' Singing projects within local Primary and Secondary schools culminating in a concert in that school. We would then like to invite them to join our Boys' Choir at RMS.

We would like to aid our own staff delivering Whole Class Instrumental Projects and Curriculum Teaching with singing resources and materials at the beginning of each year. These materials will be owned by the Music Service but loaned to our staff to use during the school year. They would be returned at the end of each year to be maintained and updated as necessary. We would also like to improve our own resources held at the Music Service and make all staff aware of the resources available for use at RMS.

We aim to be an inclusive Music Service and believe it is extremely important to work with both Mainstream schools as well as SEN Schools. We would like to set up choirs and ensembles in local SEN schools, organise regular concerts and link with mainstream school choirs. We also aim to develop more links with the wider community through singing. We would like to set up a community choir to perform regularly in the community. We aim to do this through advertisement with parents as well as contacting all our local schools.

Contact Us

For general enquiries please telephone: **01706 926750**

Email: **rochdale.musicservice@rochdale.gov.uk**

To speak to our Vocal Lead Tutor please telephone: **01706 926854**

Email: **emily.matthews@rochdale.gov.uk**